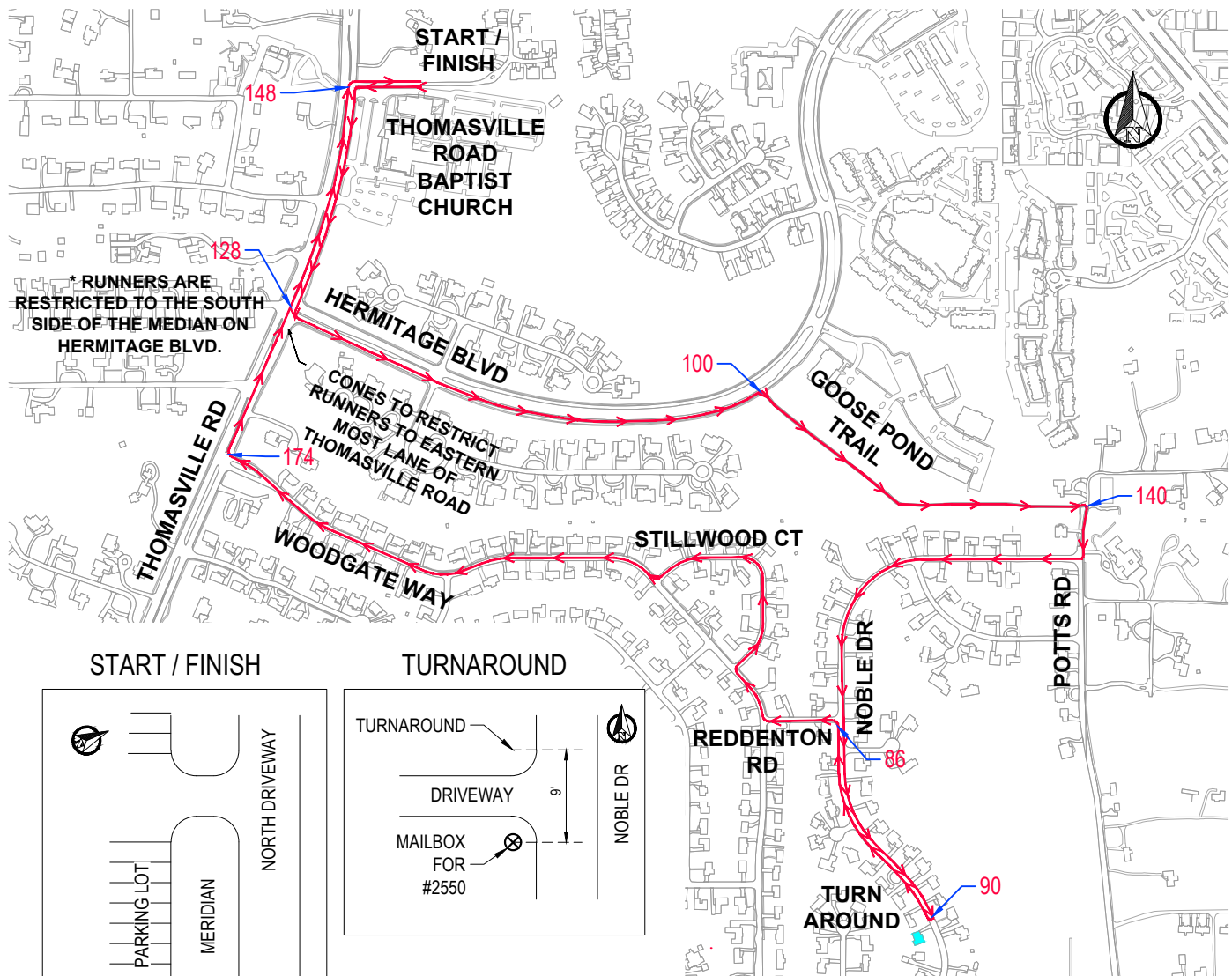
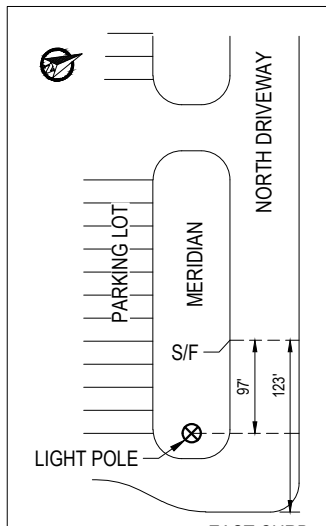


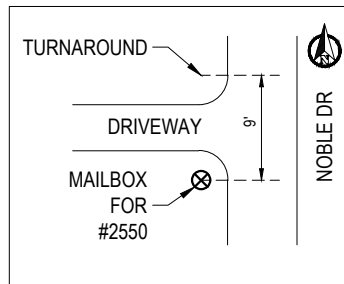
# M.A.D. DASH 5K



## START / FINISH



## TURNAROUND



## START / FINISH

ALONG NORTHERN MOST DRIVEWAY TO THOMASVILLE ROAD BAPTIST CHURCH PARKING LOT. MARK IS EXACTLY 97' WEST OF THE LIGHT POLE ON THE SOUTH SIDE OF THE DRIVEWAY IN THE NORTHEAST CORNER OF THE PARKING LOT. MARK IS ALSO 123' WEST OF THE CURB AT THE EAST TERMINUS OF THE DRIVEWAY.

- 1 MILE: ON GOOSE POND TRAIL, 6' WEST OF THE WEST EDGE OF THE SIDEWALK CONNECTING TRAIL TO # 1725 HERMITAGE.
- TURN : ON NOBLE DRIVE, 9' NORTH OF MAILBOX # 2550 (AT SOUTH END OF THE DRIVEWAY).
- 2 MILE: ALONG THE EAST SIDE OF WOODGATE WAY, 21' SOUTHEAST OF THE CABLE BOX AT THE SOUTHEAST CORNER OF STILLWOOD CT. AND WOODGATE WAY.
- 3 MILE: NEAR THE WEST END OF THE NORTHERNMOST DRIVEWAY INTO THOMASVILLE ROAD BAPTIST CHURCH PARKING LOT. THE MARK IS NEAR THE NORTHWEST CORNER OF THE FELLOWSHIP HALL BUILDING, 24' WEST OF THE POWER POLE # 45023 ON THE NORTH SIDE OF THE DRIVEWAY.

86 APPROXIMATE ELEVATION AT DESIGNATED POINT